

COME JOIN US! • NO COST TO ATTEND • NO RSVP

SASH ESTD 2006 *Coffee Time*

2025 SEPTEMBER - DECEMBER CALENDAR

EAST PIERCE & WEST PIERCE COFFEE TIME

Coffee • Refreshments • Resources • Referrals • Collaboration • Hugs!

You're Invited ~ Connect With Your Elder Care Network!

Join us at Coffee Time, a networking favorite for elder care providers in the East & West Pierce County. Come grow your referral network, share your services, connect with other professionals, and enjoy refreshments. Coffee Time is a long time Puget Sound networking tradition, with over 1,250 events hosted since 2006!

EAST PIERCE COFFEE TIME

2ND Tuesday of Every Month

Time: 9:00 - 10:30 a.m.

~ SEPTEMBER 9TH

~ OCTOBER 14TH

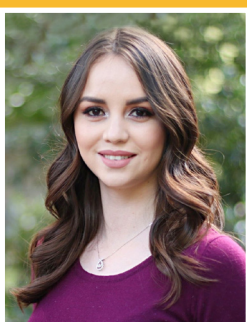
~ NOVEMBER 11TH

~ DECEMBER 9TH



Puyallup Recreation Center
Centennial Room (look for signs)
808 Valley Ave NW
Puyallup WA 98371

Learn more at
sashservices.com/coffeetime



Bring Business Cards ~ Come As You Are ~ All Elder Care Providers Welcome!

Hosted by:

Veronica Garcia, Realtor®
veronica@sashrealty.com
520-508-8068



Senior
Home Sale
Services



WEST PIERCE COFFEE TIME

1ST Wednesday of Every Month

Time: 9:00 - 10:30 a.m.

~ SEPTEMBER 3RD

~ OCTOBER 1ST

~ NOVEMBER 5TH

~ DECEMBER 3RD



The Village Senior Living
4707 S Orchard St
Tacoma, WA 98466

Want to be added to our email reminder list?
Write to: coffeetime@sashservices.com

Thank You For Your Referrals!

Learn more about SASH:
www.sashservices.com
(206) 501-4375

Trusted by Puget Sound Elder Care
Providers since 2005